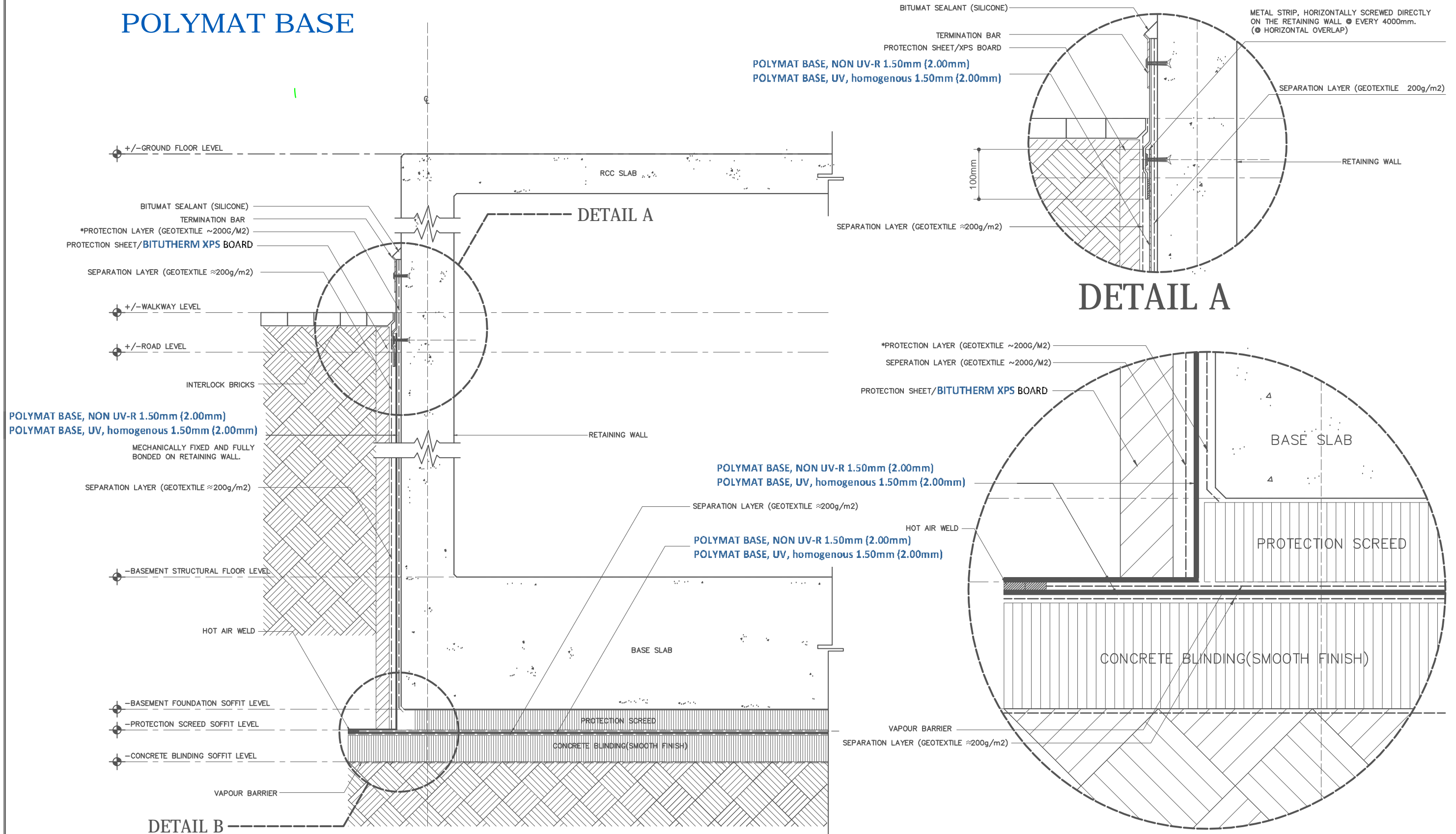


# POLYMAT BASE



POLYMAT BASE, NON UV-R 1.50mm (2.00mm)  
 POLYMAT BASE, UV, homogenous 1.50mm (2.00mm)

POLYMAT BASE, NON UV-R 1.50mm (2.00mm)  
 POLYMAT BASE, UV, homogenous 1.50mm (2.00mm)

POLYMAT BASE, NON UV-R 1.50mm (2.00mm)  
 POLYMAT BASE, UV, homogenous 1.50mm (2.00mm)

NOTE: OPTIONAL  
 \*PROTECTION LAYER (GEOTEXTILE 200g/m2) IS RECOMMENDED FOR ROUGH AND UNEVEN SURFACE FINISH. OTHERWISE, THE PVC MEMBRANE CAN BE DIRECTLY APPLIED ON THE SUBSTRATE SURFACE.

**BASEMENT WATERPROOFING**  
 SCALE 1:10 M.

**BITUMAT COMPANY LIMITED**  
 P.O. Box 7487, Dammam 31462, Kingdom of Saudi Arabia  
 Tel. No. (+966-13) 8121210 / 8121213  
 Fax No. (+966-13) 8121190  
 Google Earth Address: 2608 34327-6935  
 Website: www.bitumat.com

THIS DRAWING IS FOR ILLUSTRATIVE PURPOSES ONLY OF PROFILES SHOWN IN OUR OFFICIAL CATALOGUE. ALL PROFILES MUST BE VERIFIED AND APPROVED BY THE AUTHORIZED REPRESENTATIVE OF BITUMAT BEFORE ANY ACTION IS TAKEN.

DRAWING TITLE	REMARKS	REVISION	DRAWN BY :	DWG. No.
POLYMAT PVC - SINGLE PLY BASEMENT WATERPROOFING (HORIZONTAL + VERTICAL)		0.0	CHECKED BY :	MS.02.01-01
SHEET CONTENTS : WATERPROOFING SYSTEM DETAILS			DATE :	
			REF. NO.	

REVISION	DRAWN BY :	DWG. No.
0.0	CHECKED BY :	MS.02.01-01
DATE :	DATE :	
	REF. NO.	